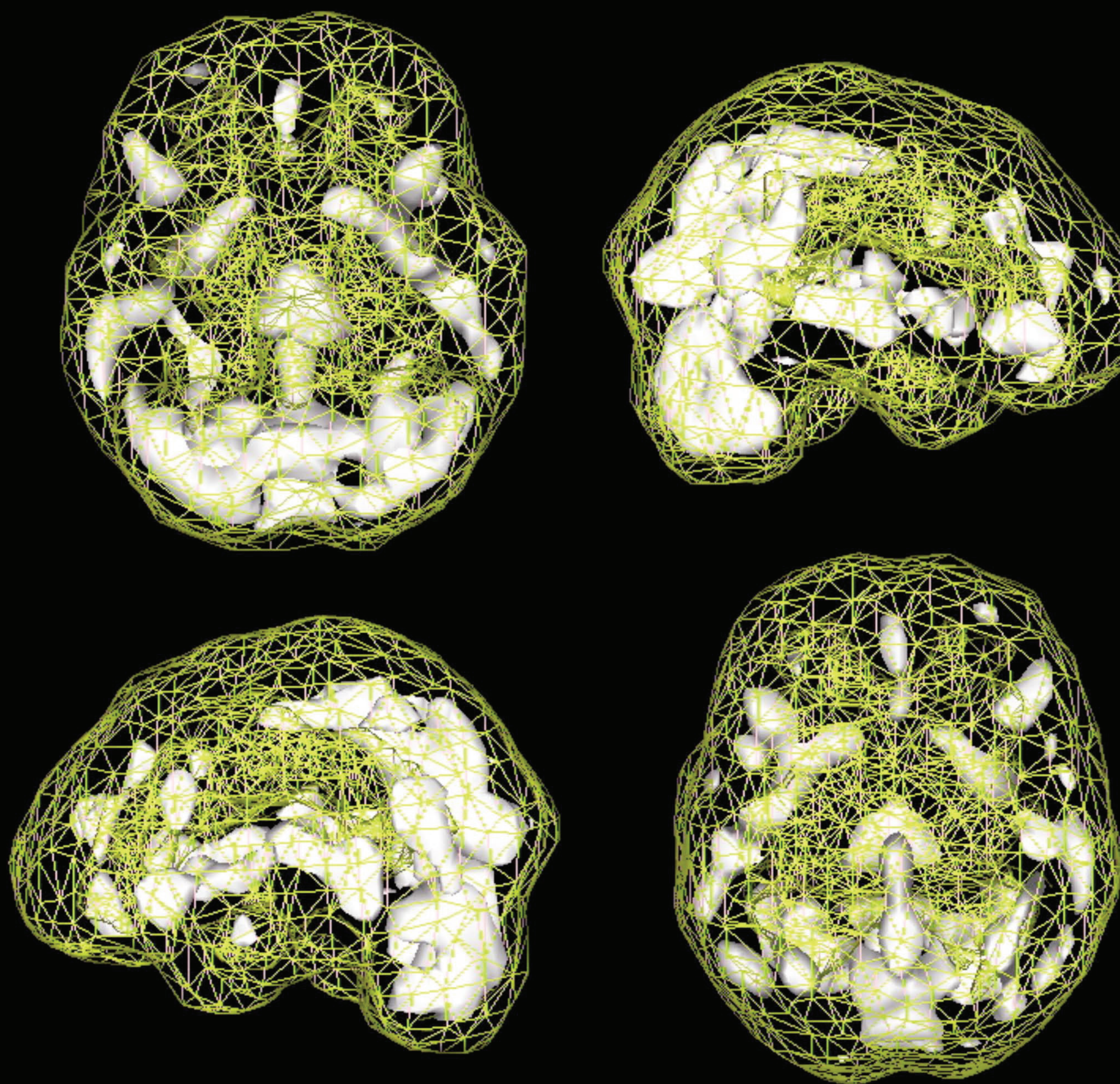
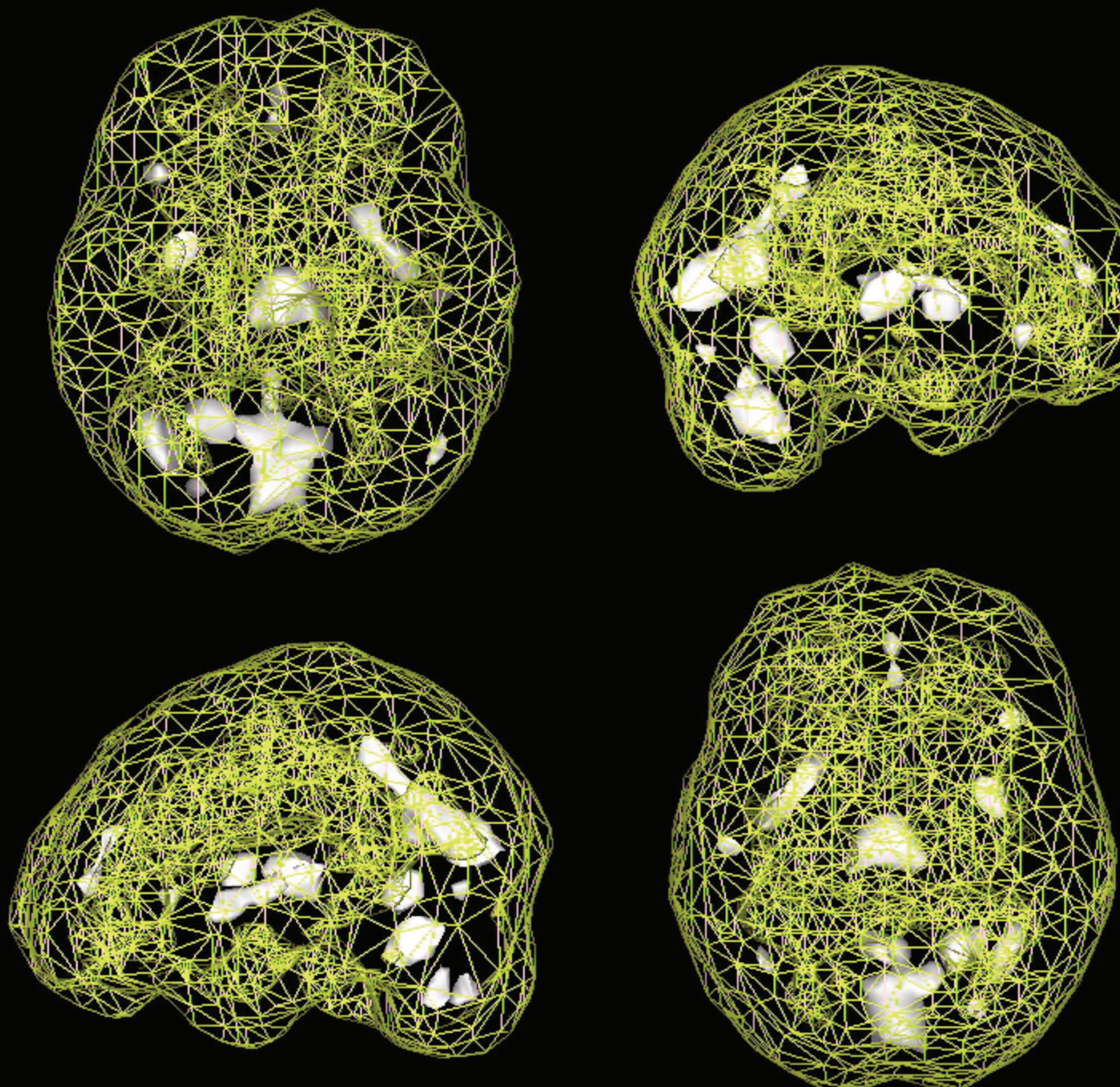


## **Irlen Syndrome without Irlen Filters®**



**These three-dimensional scans using SPECT technology show the portions of the brain that are in heavy use, or 'hot'. Both scans are of the same brain without, and then with, Irlen Filters. In the scan above, there are many parts of the brain that are 'hot' – many more than is the case for a 'normal' brain. The scan below shows that the brain is 'normalised' once the Irlen Filters are used.**

## **Irlen Syndrome with Irlen Filters®**



**SPECT Scans from the Amen Clinic, Newport Beach, CA, USA**